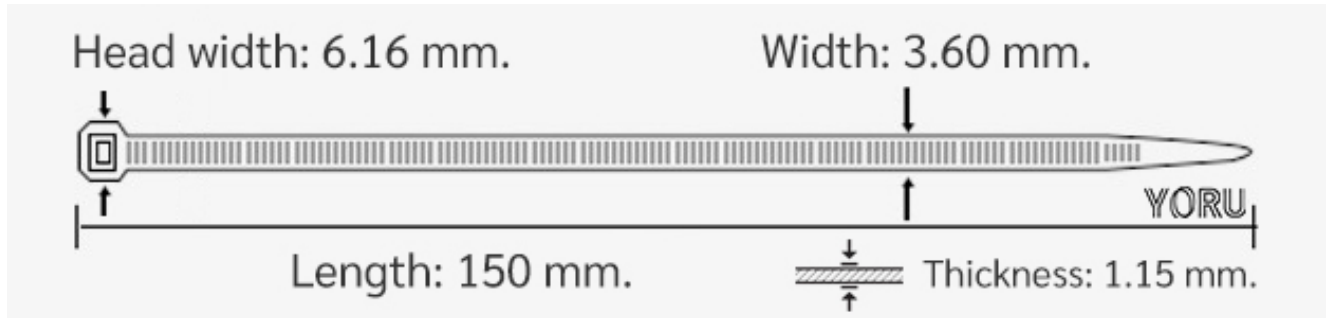


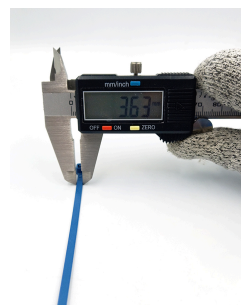
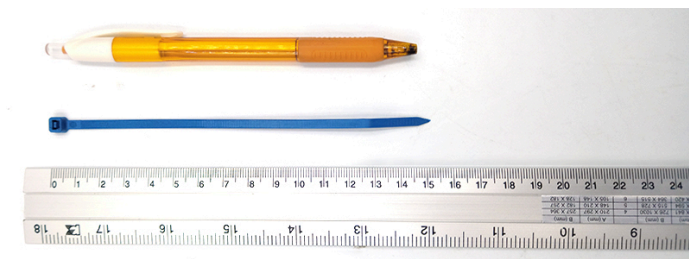
YORU Cable Ties Datasheet



Model YR150-04MTD
Size Label 6" x 3.6 mm.



Color	Teal (Blue-Green Color)
Type	Metal Detecable
Material	Polyamide 6.6 with Metal Detectable Additive (L2DM7966BL)
Flammability	n/a
ROHS Compliant	Yes
Food Contact	Suitable
Releasable Closure	No
Length	6 inch (Imperial)
	150 mm. (Metric)
Width	3.60 mm. (Body) ± 0.2 mm
	6.16 mm. (Head) ± 0.2 mm
Thickness	≈ 1.15 mm. (Body) $\pm 10\%$
Operating Temperature	-40°F to +185°F (Fahrenheit)
	-40°C to +85°C (Celsius)
Minimum Tensile Strength	33.0 lbs (Imperial)
	15.0 Kgs (Metric)
Bundle Diameter	3.0 mm. (Minimum)
	35.0 mm. (Maximum)
Weight	≈ 0.70 grams (1 piece)
Features	Easy operation, Good insulation, Self-locking and Suitable for Food Contact Applications



Pictures of products and dimensions are approximate and subject to technical changes (with a tolerance of $\pm 5\%$ or ± 0.2 mm).