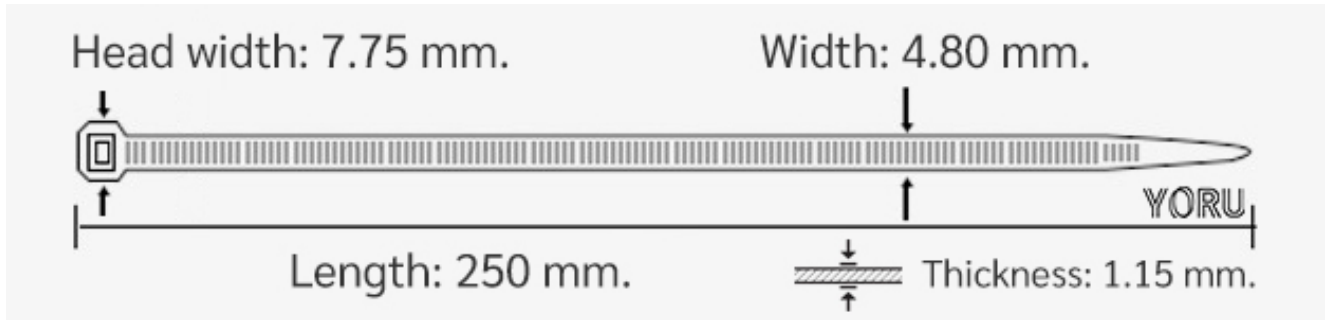


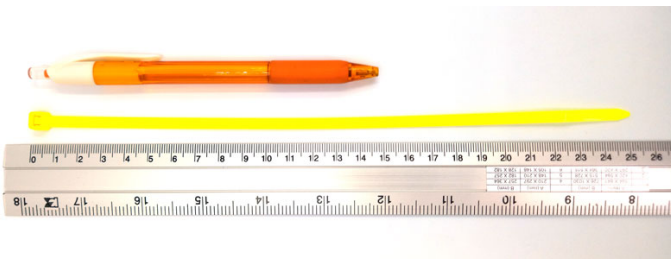
# YORU Cable Ties Datasheet



Model YR250-05CLY  
 Size Label 10" x 4.8 mm.



<b>Color</b>	Yellow
<b>Type</b>	Standard Color
<b>Material</b>	Polyamide 6.6 High impact (Nylon 6.6 or PA66)
<b>Flammability</b>	UL94 V-2
<b>ROHS Compliant</b>	Yes
<b>UL Recognized</b>	Yes
<b>Releasable Closure</b>	No
<b>Length</b>	10 inch (Imperial)
	250 mm. (Metric)
<b>Width</b>	4.80 mm. (Body) $\pm 0.2$ mm
	7.75 mm. (Head) $\pm 0.2$ mm
<b>Thickness</b>	$\approx 1.15$ mm. (Body) $\pm 10\%$
<b>Operating Temperature</b>	-40°F to +185°F (Fahrenheit)
	-40°C to +85°C (Celsius)
<b>Minimum Tensile Strength</b>	50.0 lbs (Imperial)
	22.0 Kgs (Metric)
<b>Bundle Diameter</b>	3.0 mm. (Minimum)
	65.0 mm. (Maximum)
<b>Weight</b>	$\approx 1.60$ grams (1 piece)
<b>Features</b>	Easy operation, Good insulation, Self-locking, Anti-corrosion and durability.



Pictures of products and dimensions are approximate and subject to technical changes (with a tolerance of  $\pm 5\%$  or  $\pm 0.2$  mm).