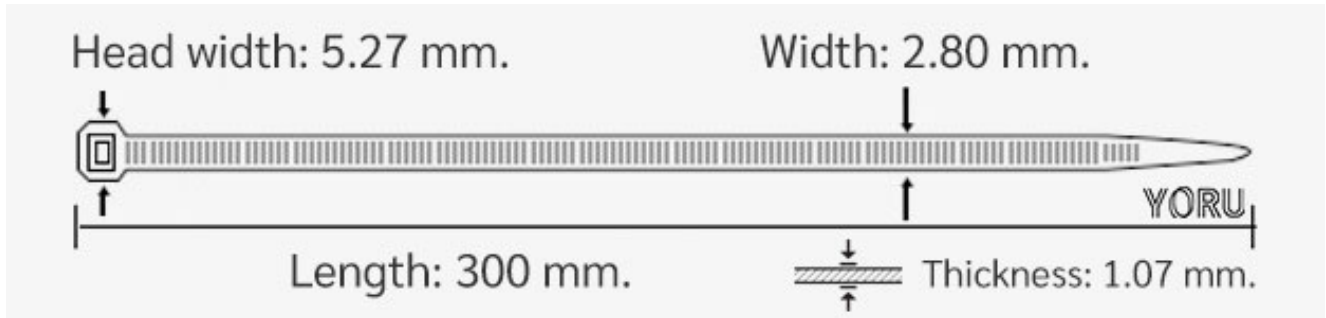


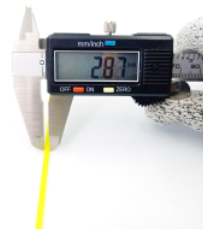
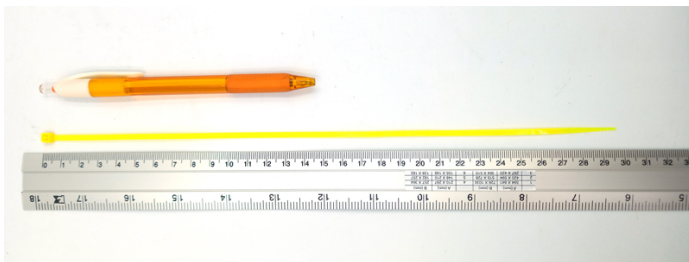
YORU Cable Ties Datasheet



Model YR300-03CLY
 Size Label 12" x 2.8 mm.



Color	Yellow
Type	Standard Color
Material	Polyamide 6.6 High impact (Nylon 6.6 or PA66)
Flammability	UL94 V-2
ROHS Compliant	Yes
UL Recognized	Yes
Releasable Closure	No
Length	12 inch (Imperial)
	300 mm. (Metric)
Width	2.80 mm. (Body) ± 0.2 mm
	5.27 mm. (Head) ± 0.2 mm
Thickness	≈ 1.07 mm. (Body) $\pm 10\%$
Operating Temperature	-40°F to +185°F (Fahrenheit)
	-40°C to +85°C (Celsius)
Minimum Tensile Strength	25.0 lbs (Imperial)
	12.0 Kgs (Metric)
Bundle Diameter	3.0 mm. (Minimum)
	80.0 mm. (Maximum)
Weight	≈ 1.80 grams (1 piece)
Features	Easy operation, Good insulation, Self-locking, Anti-corrosion and durability.



Pictures of products and dimensions are approximate and subject to technical changes (with a tolerance of $\pm 5\%$ or ± 0.2 mm).