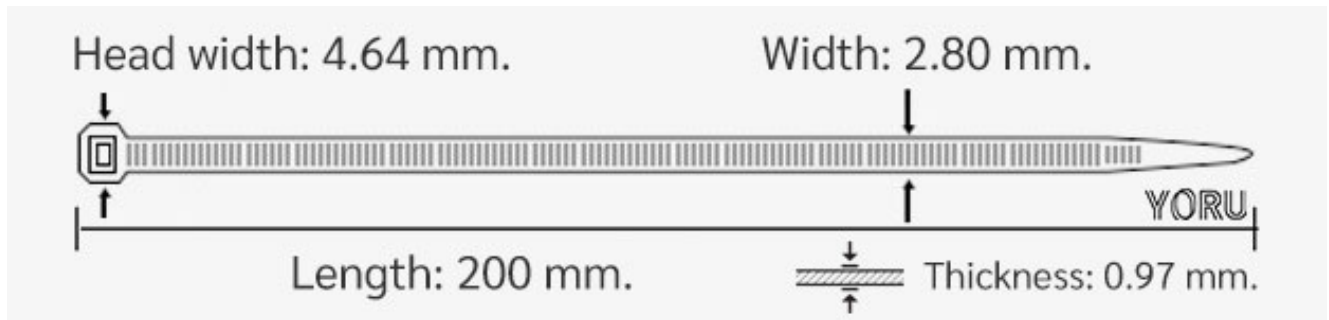


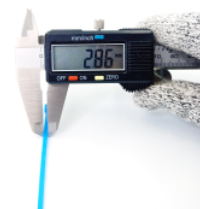
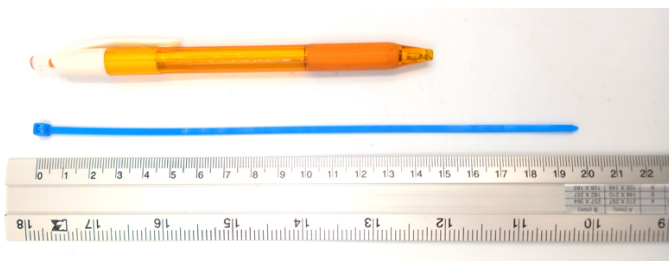
# YORU Cable Ties Datasheet



**Model** YR200-03CLB  
**Size Label** 8" x 2.8 mm.



<b>Color</b>	Blue
<b>Type</b>	Standard Color
<b>Material</b>	Polyamide 6.6 High impact (Nylon 6.6 or PA66)
<b>Flammability</b>	UL94 V-2
<b>ROHS Compliant</b>	Yes
<b>UL Recognized</b>	Yes
<b>Releasable Closure</b>	No
<b>Length</b>	8 inch (Imperial)
	200 mm. (Metric)
<b>Width</b>	2.80 mm. (Body)
	4.64 mm. (Head)
<b>Thickness</b>	≈ 0.97 mm. (Body) ± 10%
<b>Operating Temperature</b>	-40°F to +185°F (Fahrenheit)
	-40°C to +85°C (Celsius)
<b>Minimum Tensile Strength</b>	25.0 lbs (Imperial)
	12.0 Kgs (Metric)
<b>Bundle Diameter</b>	3.0 mm. (Minimum)
	50.0 mm. (Maximum)
<b>Weight</b>	≈ 0.90 grams (1 piece)
<b>Features</b>	Easy operation, Good insulation, Self-locking, Anti-corrosion and durability.



Pictures of products and dimensions are approximate and subject to technical changes (with a tolerance of ± 5%).