

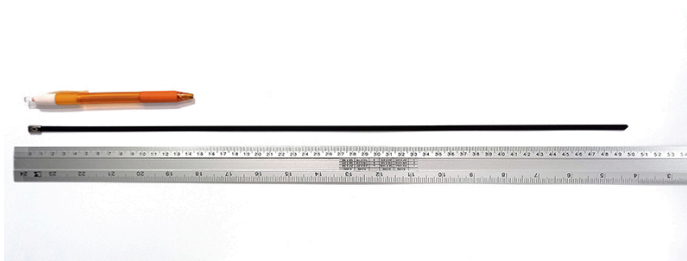
# YORU Cable Ties Datasheet



**Model** YR500-46SSL  
**Size Label** 20" x 4.6 mm.



<b>Color</b>	Silver + <b>Sprayed Black</b>
<b>Type</b>	Stainless (Ball Lock)
<b>Material</b>	Stainless Steel 304 (SUS304)
<b>Flammability</b>	UL94 V-2
<b>ROHS Compliant</b>	Yes
<b>UL Recognized</b>	Yes
<b>Releasable Closure</b>	No
<b>Length</b>	20 inch (Imperial)
	500 mm. (Metric)
<b>Width</b>	4.60 mm. (Body)
	6.23 mm. (Head)
<b>Thickness</b>	≈ 0.35 mm. (Body) ± 10%
<b>Operating Temperature</b>	-76°F to +1,022°F (Fahrenheit)
	-60°C to +550°C (Celsius)
<b>Minimum Tensile Strength</b>	130.0 lbs (Imperial)
	60.0 Kgs (Metric)
<b>Bundle Diameter</b>	12.0 mm. (Minimum)
	128.0 mm. (Maximum)
<b>Weight</b>	≈ 5.30 grams (1 piece)
<b>Features</b>	Easy operation, Good insulation, Self-locking, Lightweight, Anti-corrosion and durability.



Pictures of products and dimensions are approximate and subject to technical changes (with a tolerance of ± 5% or ±0.2 mm).