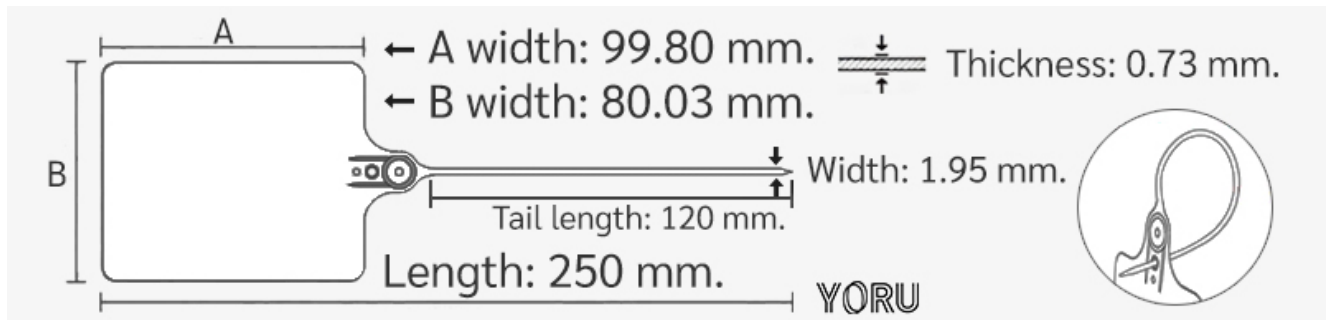


# YORU Cable Ties Datasheet



**Model** YR250-8NMCY  
**Size Label** 10" x 1.9 mm.



|                                 |  |
|---------------------------------|--|
| <b>Color</b>                    | Yellow   |
| <b>Type</b>                     | Label (Large)  |
| <b>Material</b>                 | Polypropylene (PP)   |
| <b>Flammability</b>             | No   |
| <b>ROHS Compliant</b>           | Yes  |
| <b>UL Recognized</b>            | No   |
| <b>Releasable Closure</b>       | No   |
| <b>Length</b>                   | 10 inch (Imperial)   |
|                                 | 250 mm. (Metric)   |
| <b>Width</b>                    | 1.90 mm. (Body) $\pm 0.1$ mm   |
|                                 | 80.00 x 100.00 mm. (Marker Head) $\pm 0.2$ mm                                      |
| <b>Thickness</b>                | $\approx 1.90$ mm. (Body) $\pm 10\%$   |
|                                 | $\approx 2.01$ mm. (Market Head) $\pm 10\%$  |
| <b>Operating Temperature</b>    | +14°F to +176°F (Fahrenheit)   |
|                                 | -10°C to +80°C (Celsius)   |
| <b>Minimum Tensile Strength</b> | N/A lbs (Imperial)   |
|                                 | N/A Kgs (Metric)   |
| <b>Bundle Diameter</b>          | 11.0 mm. (Minimum)   |
|                                 | 19.0 mm. (Maximum)   |
| <b>Weight</b>                   | $\approx 6.15$ grams (1 piece)   |
| <b>Features</b>                 | Large Labeling Area, Easy to Install, Self-locking, Anti-corrosion and durability. |



Pictures of products and dimensions are approximate and subject to technical changes (with a tolerance of  $\pm 5\%$  or  $\pm 0.2$  mm).