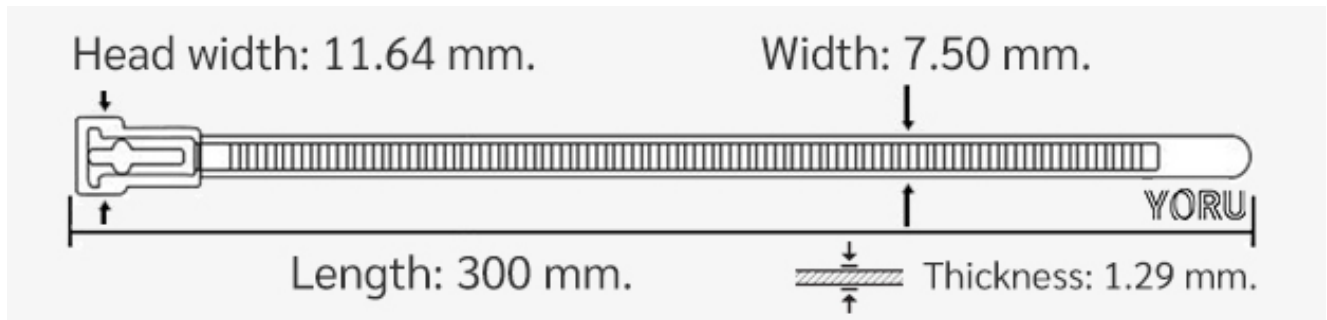


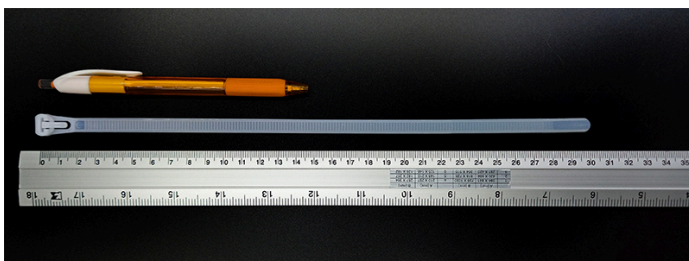
# YORU Cable Ties Datasheet



**Model** YR300-8CUNW  
**Size Label** 12" x 7.5 mm.



|                                 |   |
|---------------------------------|---|
| <b>Color</b>                    | White (Natural)   |
| <b>Type</b>                     | Releasable  |
| <b>Material</b>                 | Polyamide 6.6 High impact (Nylon 6.6 or PA66)                                 |
| <b>Flammability</b>             | UL94 V-2  |
| <b>ROHS Compliant</b>           | Yes   |
| <b>UL Recognized</b>            | Yes   |
| <b>Releasable Closure</b>       | Yes   |
| <b>Length</b>                   | 12 inch (Imperial)  |
|                                 | 300 mm. (Metric)  |
| <b>Width</b>                    | 7.50 mm. (Body) $\pm 0.2$ mm  |
|                                 | 11.64 mm. (Head) $\pm 0.2$ mm   |
| <b>Thickness</b>                | $\approx 1.29$ mm. (Body) $\pm 10\%$  |
| <b>Operating Temperature</b>    | -40°F to +185°F (Fahrenheit)  |
|                                 | -40°C to +85°C (Celsius)  |
| <b>Minimum Tensile Strength</b> | 50.0 lbs (Imperial)   |
|                                 | 22.0 Kgs (Metric)   |
| <b>Bundle Diameter</b>          | 4.0 mm. (Minimum)   |
|                                 | 75.0 mm. (Maximum)  |
| <b>Weight</b>                   | $\approx 3.20$ grams (1 piece)  |
| <b>Features</b>                 | Easy operation, Good insulation, Self-locking, Anti-corrosion and durability. |



Pictures of products and dimensions are approximate and subject to technical changes (with a tolerance of  $\pm 5\%$  or  $\pm 0.2$  mm).